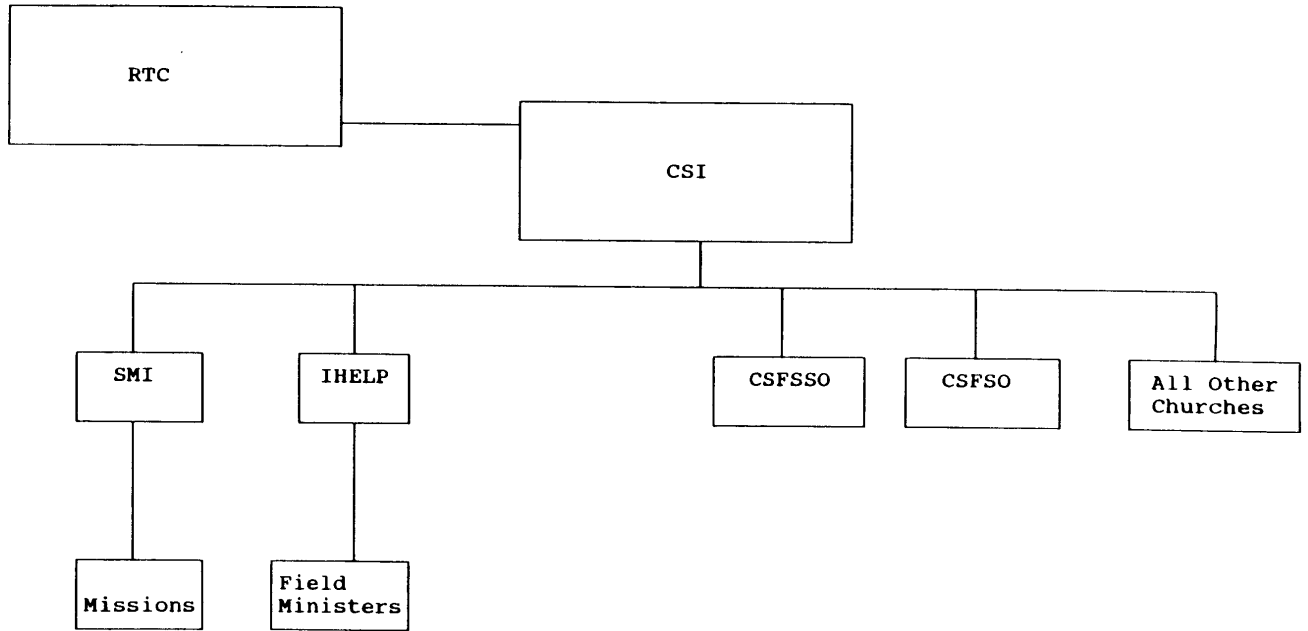


CHURCHES OF SCIENTOLOGY



Ex. I-3

CSI FROM NOV 22 1993 229982

## SUMMARY DESCRIPTION OF CHURCHES OF SCIENTOLOGY

RTC (Religious Technology Center) -- owns the Scientology religious marks and advanced technology. It licenses the marks to CSI for sublicense to subordinate churches and directly licenses the advanced technology to appropriate churches. Through this structure RTC assures that practice of the Scientology religion within the ecclesiastical hierarchy under CSI's authority as Mother Church remains strictly orthodox, in accordance with the Scientology Scriptures. This church has a staff of approximately 50 individuals and an annual budget of approximately \$6.6 million, based on its annual disbursements for the most recent year for which financial statements are available.

CSI (Church of Scientology International) -- is the Mother Church of the Scientology religion, with ecclesiastical authority over the ministry of religious services to parishioners by all subordinate churches within the ecclesiastical hierarchy. This church has a staff of approximately 990 individuals and an annual budget of approximately \$46.8 million, based on its annual disbursements for the most recent year for which financial statements are available.

CSFSSO (Foundation Church of Scientology Flag Ship Service Organization) -- ministers the highest levels of religious services to parishioners from around the world from aboard a ship operated in the Caribbean as religious retreat. This church has a staff of approximately 108 individuals and an annual budget of approximately \$11.1 million, based on its annual disbursements for the most recent year for which financial statements are available.

CSFSO (Church of Scientology Flag Service Organization, Inc.) -- ministers high levels of religious services to parishioners from around the world from facilities in Clearwater, Florida. This church has a staff of approximately 449 individuals and an annual budget of approximately \$81.3 million, based on its annual disbursements for the most recent year for which financial statements are available.

Other Churches -- include all churches lower than CSFSSO and CSFSO in the ecclesiastical hierarchy. Other churches include the four ecclesiastical "Advanced and Saint Hill Organizations," which minister upper level religious services to parishioners within their geographic areas. These ecclesiastical organizations are housed in four corporations, each located in a separate continental area: Church of Scientology Western United

States (in the United States) ("CSWUS"); Church of Scientology Religious Education College (in the United Kingdom) ("CSREC"); Church of Scientology Advanced Organization Saint Hill Europe and Africa (Europe and Africa) ("CS AOSH EU/AF"); and Church of Scientology, Inc. (Australia, New Zealand and Oceania) ("C of S Inc."). Each of these four corporations also houses intermediate level ecclesiastical management organizations and organizations which provide accommodations for Church staff. In addition, CSREC and C of S Inc. also house Class V churches in the United Kingdom and Australia, respectively. CSWUS has a staff of approximately 490 individuals and an annual budget of approximately \$29.6 million, based on its annual disbursements for the most recent year for which financial statements are available. CSREC has a staff of approximately 352 individuals and an annual budget of approximately \$12.3 million, based on its annual disbursements for the most recent year for which financial statements are available. CS AOSH EU/AF has a staff of approximately 256 individuals and an annual budget of approximately \$11.7 million, based on its annual disbursements for the most recent year for which financial statements are available. C of S Inc. has a staff of approximately 426 individuals and an annual budget of approximately \$10.3 million, based on its annual disbursements for the most recent year for which financial statements are available.

Other churches include Class V Churches (formerly called Class IV Churches), which minister lower levels of religious services to parishioners in their localities and conduct initial ministerial training. There are 52 Class V Churches in the United States alone and over 140 worldwide. Other churches also include ecclesiastical management and administration organizations.

Missions -- These organizations, nearly 100 in the United States alone and over 250 worldwide, minister the lowest levels of religious services to parishioners within their localities. Missions are under the ecclesiastical authority of SMI (Scientology Missions International), which in turn is under the ecclesiastical authority of CSI. SMI itself has a staff of approximately 26 individuals and an annual budget of approximately \$2.6 million, based on its annual disbursements for the most recent year for which financial statements are available.

Field Ministers -- These are individuals who minister the lowest levels of religious services (the same levels ministered by Missions) to individual parishioners. There are nearly 1,500 Field Ministers worldwide, including nearly 500 in the United States. Field Ministers are under the ecclesiastical authority of IHELP (the International Hubbard Ecclesiastic League of Pastors) which in turn itself is under the ecclesiastical authority of CSI. IHELP itself has a staff of approximately 2 individuals and an annual budget of approximately \$400,000, based on its annual disbursements for the most recent year for which financial statements are available.