

HUBBARD COMMUNICATIONS OFFICE  
Saint Hill Manor, East Grinstead, Sussex

Remimeo  
HCO POLICY LETTER OF 3 OCTOBER 1970RA  
REVISED 9 NOVEMBER 1979  
RE-REVISED 27 AUGUST 1982

(Re-revised 27.8.82 to correctly label the eighth graph in the series shown. This graph was mis-labeled "Power Trend" but is actually a steeply Affluence-trending graph. The revision includes an additional graph showing Affluence going into Power. updates the reference section of the issue and adds to it a Policy Letter giving more data on the Conditions of Power and Affluence.)

(Revisions in Script)

STAT INTERPRETATION

REF: HCO PL 9 Nov 79R HOW TO CORRECTLY DETERMINE A  
Rev. 27.8.82 STAT TREND  
HCO PL 6 Nov 66R I ADMIN KNOW-HOW, STATISTIC  
Rev. 9.11.79 INTERPRETATIVE, STATISTIC  
ANALYSIS  
HCO PL 5 May 71RA II READING STATISTICS  
Re-Rev. 27.8.82  
HCO PL 6 Mar 66 II STATISTIC GRAPHS, HOW TO  
FIGURE THE SCALE  
HCO PL 27 Aug 82 VITAL DATA: POWER AND  
AFFLUENCE CONDITIONS

This Policy Letter has been revised 9.11.79 to delete the statement "The dotted line is drawn roughly through an average in all TREND cases" as the statement has been broadly misinterpreted to mean that one would determine a trend by drawing a line from the mid-point of the first line of the trend period to the mid-point of the last line.

This latter is a FALSE DATUM. It would only be correct about 50% of the time and is not to be used. The correct method of reading a stat trend is given below and is covered in detail in HCO PL 9 Nov 79R, Rev. 27.8.82, HOW TO CORRECTLY DETERMINE A STAT TREND.

The interpretation of statistics includes trend.

TREND means the tendency of statistics to average out up, level or down over several weeks or even months as long as the situation remains.

The closer one is to the scene of the stat, the more rapidly it can be adjusted and the smaller the amount of time per stat needed to interpret it.

One can interpret one's own personal statistic hour to hour.

A division head can interpret on a basis of day to day.

An Executive Secretary needs a few days' worth of stat.

An Executive Director would use a week's worth of stat.

A more remote governing body would use a TREND (which would be several weeks) of divisional stats to interpret.

Copyright © 1970, 1979, 1982 L. Ron Hubbard  
ALL RIGHTS RESERVED

Ex. III-4-F

In short the closer one is to a statistic the easier it is to interpret it and the easier it is to change it.

One knows he had no stat on Monday - he didn't come to work. So Tuesday he tries to make up for it.

At the other end of the scale, a Continental Executive Council would have to use a trend of weeks to see what was going on.

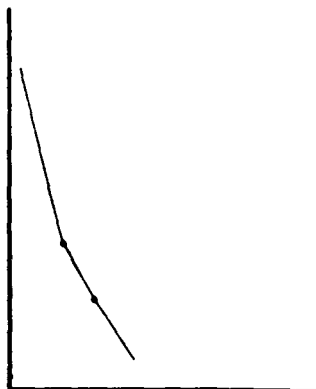
#### READING STAT TRENDS

A TREND is an inclination toward a general course or direction.

TRENDS can be anything from Danger to Power, depending on the slant and its steepness. It is also possible to have a Non Existence Trend.

NOTE: ON THE GRAPHS BELOW THE DOTTED LINES HAVE BEEN DRAWN IN SIMPLY AND ONLY TO SHOW THE TREND -- THE GENERAL COURSE OR DIRECTION -- THESE STATISTICS ARE TAKING OVER A PERIOD OF WEEKS. They are given here to educate one in the relationship between trend lines and conditions and for no other purpose. One does NOT in actuality determine a trend by drawing a dotted line or any kind of line through the graph. A trend is determined by looking. It is done with the eye. One must visually average the peaks and valleys of a stat and one looks at the period of time overall and determines the pitch or slant of the graph. Determining stat trends correctly is covered fully in HCO PL 9 Nov 79R, Rev. 27.8.82, HOW TO CORRECTLY DETERMINE A STAT TREND.

A Non Existence TREND would look like this: (plotted by weeks)



This would also be a Non Existence TREND:

